

Nuclear imaging of immune checkpoint molecules a new frontier in therapeutic prediction?

Dr. Frederike Bensch

Longoncologie
UMC Groningen, NL

Prof. Karine Breckpot

Laboratory of Molecular and Cellular Therapy
UZ Brussel

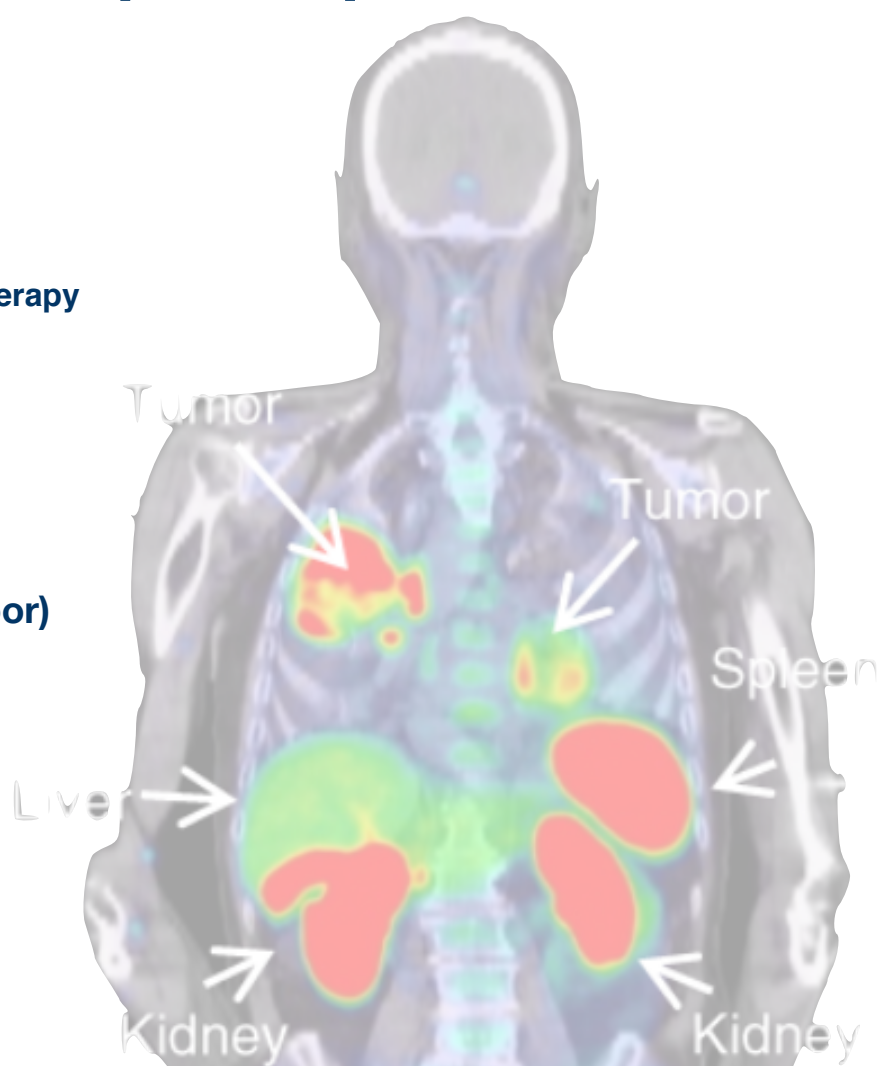
where

MRB2 - Seminar Room (ground floor)

Campus UZ Gent Ingang 38
C. Heymanslaan 10
9000 Gent

when

Friday December 20th 10:00-11:00



Today, selecting responders to immune checkpoint blockade requires invasive tumor sampling. Expression levels of a predictive biomarker - typically PD-L1- are scored on tissue biopsies.

ION-Ghent invite you to hear two talks on cutting-edge, **imaging techniques** to predict response to immune checkpoint blockade in cancer patients. **Dr. F. Bensch** (UMC Groningen) will share her work on positron-emitting anti-PD-L1 tracers, while **Prof. K. Breckpot** (UZ Brussel) will elaborate on the potential of nanobodies to probe PD-L1 expression *in vivo*.

We expect a multidisciplinary mix of attendees and a lively discussion!

with the support of

